

# 237 Cheswick Drive

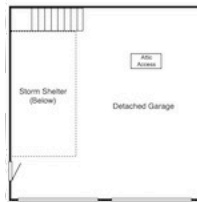
Madison, AL 35757

**Price:** \$319,900  
**MLS:** 1144687  
**Beds:** 4  
**Baths:** 2.75  
**Floors:** 1  
**Square Feet:** 2660  
**Subdivision:** Kellywoods  
**Elementary School:** Legacy  
**Middle School:** Monrovia  
**High School:** Sparkman



Lovingly landscaped, this brick rancher located in desirable Kellywoods includes a second master bedroom and a bonus garage with storm shelter.

The home has been upgraded to include new appliances, lighting, counter tops, hardware, toilets, and flooring.



The kitchen offers granite counters and glass door on the corner cabinet.

The breakfast bay includes crown moulding, chair rail, and a built-in cabinet with glass doors and granite counter.

French doors open from the living room into the foyer and dining room.

A box ceiling and abundance of moulding add character to the dining room.

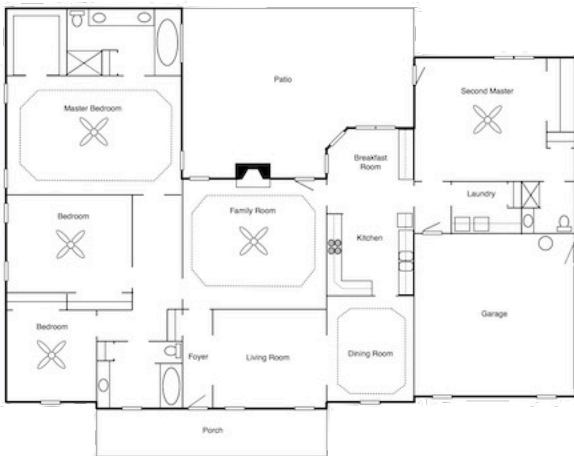
Recessed lighting accents the gas fireplace in the family room.

A large sitting area, box ceiling, glamour bath, and large walk-in closet make the master bedroom a welcome retreat.

The isolated second master has direct access to the patio.

Enjoy outdoor living from the stamped concrete patio.

A total of 4 bays are available in the attached side-entry and detached garage.



**Cindy Batt Spee**  
Realtor®  
256.337.3030  
[cindy@tommysplace.net](mailto:cindy@tommysplace.net)

**Tommy**  
*Pruett*  
Real Estate, Inc.

[tommysplace.net](http://tommysplace.net)  
256.722.9333



**Tommy Pruett**  
Broker  
256.426.3031  
[tommy@tommysplace.net](mailto:tommy@tommysplace.net)

